



Sexual Assault  
Centre of Edmonton

2014

# ANNUAL REPORT



providing crisis intervention   public education   counselling

## MISSION

The Sexual Assault Centre of Edmonton exists to empower individuals affected by sexual abuse and assault and to empower communities so they can take action against sexual violence.

## CORE BELIEFS

We believe...

- ~ sexual violence is an abuse of power and trust;
- ~ people can heal;
- ~ in valuing diversity and respecting all people;
- ~ individuals should be free to make their own life choices;
- ~ each person should have the opportunity to learn and grow;
- ~ in creating a safe environment and maintaining confidentiality;
- ~ inability to pay should not be a barrier to receiving service;
- ~ in providing support and advocacy for people who have been affected by sexual violence;
- ~ services must be accessible to children, adolescents, women and men;
- ~ communities must take action to protect vulnerable people and to become free from violence;
- ~ offenders, not victims, must take responsibility for violence;
- ~ teamwork is essential;
- ~ volunteers are crucial to our agency and provide a link to the community.

## Message from the Board Chair

As always, it is my honour and privilege to bring greetings from my Board Colleagues to the membership and the general public. We are a Governance Board, so the members of the Strategic Planning, Policy and Procedures, and Risk Management Committees provide research and information to assist in decision making, as well as providing the framework that forms the basis of our work,

I wish to thank our funders whose ongoing support is integral to the fabulous work of SACE: The United Way of the Alberta Capital Region, City of Edmonton Family and Community Support Services, Alberta Justice and Solicitor General, Alberta Human Services, Alberta Health. We are also very grateful for the many donations from individuals, organizations and corporations.

As always, our volunteers need to be acknowledged for the valuable contributions to the Agency, including my Board colleagues: Karen Booth, Allison Downey-Damato, Gillian Evans, Elaine Degrandpre, Mary Frances Fitzgerald, Namatra Gill, Shawna Grimes, Pat Harrish, Amber Krasowski, Laura Lee, Carlynn McAneeley, JoAnn McCartney, Kirsty Prasad, John Ratcliff, Ryan Schetzlsle, and Denise Watson.

Our *"It Takes Two"* fundraiser in February was a fabulous success and showcased the resiliency, hope and strength of survivors of sexual violence. The funds raised at the event will be used to provide services and support to the many individuals who have been impacted by the crime of sexual assault/abuse.

Karen Smith is the wonderful leader of the great staff that works with her. Without her dedication and continued good work, we would not be the successful agency that we are.

Susan Jamieson  
Board Chair

*"It is only in our darkest hours that we may discover the true strength of the brilliant light within ourselves that can never, ever, be diminished."*

*Zoe Zantamata*

# Board of Directors

## EXECUTIVE

Susan Jamieson  
Chair

Carlynn McAneeley  
Vice Chair

Ryan Schetzle  
Treasurer

Elaine Degrandpre  
Secretary

## BOARD MEMBERS

Karen Booth  
Allison Downey-Damato  
Gillian Evans  
Mary Frances Fitzgerald  
Namatra Gill  
Shawna Grimes  
Pat Harrish  
Amber Krasowski  
Laura Lee  
JoAnn McCartney  
Kirsty Prasad  
John Ratcliff  
Denise Watson

"How wonderful it is that  
nobody need wait a  
single moment  
to improve the world"  
*Anne Frank*

# Staff

**Executive Director**  
Karen L. Smith

**Financial Administrator**  
Melanie Brochu

**Assistant Executive Director**  
Mary Jane James

**Office Manager**  
Terra Irvine

**Office Assistants**  
Marion Desplenter  
Pat Croswell

**Communications Specialist**  
Sara Cameron

**Public Education**  
Nikki Bernier (Director)  
Annette Klevgaard  
Stephanie Olsen

**Client Services**  
Dr. Karen Dushinski (Director)  
Morgan Bissegger  
Janelle Boisvert  
Christy Hennig  
Hala Kaiss  
Monika Penner  
Katie Poirier  
Maija Prakash  
Ruth Pullam  
Maria Skriver  
Lauren Wiles

**Diversity Outreach, Intake and  
Court Support Program**  
Dr. Christine Mhina (Director)  
Matilda Kamara  
Meital Siva-Jain

**Volunteer Services**  
Shannah Barros (Acting Director)

## Treasurer's Report

SACE continues to remain in a financially stable position due to the generous contributions of our funders, combined with the efficiency and dedication of the volunteers, staff and management of SACE.

SACE is extremely grateful for the financial support received from its core funders, the United Way of the Alberta Capital Region, City of Edmonton Family and Community Support Services, Alberta Human Services, Alberta Health, and Alberta Justice and Solicitor General.

Additional funding is provided to SACE from a number of other organizations. This funding provides supplementary support to our core services, and also presents opportunities for additional, unique service provision. SACE would like to thank the following organizations for their financial support: City of Edmonton Community Investment Operating Grant, Alberta Community Spirit Community Initiatives Grant, Edmonton Community Foundation, TELUS Community Foundation, Royal Alexandra Hospital Employees Charitable Donations Fund, Servus Credit Union, and Lloyd Sadd Insurance Brokers. SACE would also like to acknowledge the continued generous support and assistance received from our landlord, Allan Edie, of A.B. Edie Equities Inc.

In 2014, SACE had our first *"It Takes Two"* fundraising event, which was successful at both raising awareness and funds. The funds raised from the event helped secure SACE's capital replacement requirements going forward, as well as a more appropriate reserve given the annual operations of the agency.

Each year the financial goal of SACE is to use its available resources in a highly efficient manner such that SACE can continue to provide the much needed exceptional services to the community that it has for many years. In 2014, SACE achieved that goal. And going forward, with the continued and increasing support of its funders, SACE is committed to meeting the ongoing financial challenges of not for profit entities, while still being able to provide the same high level essential services to our community.

Ryan Schetzle,  
Treasurer

## Message from the Executive Director

As I look back over my 21 years at SACE, I realize I have been involved here for about half the life of this organization. SACE began in 1975 as a part time crisis line staffed by volunteers in response to Edmonton being recognized as the "rape capital of Canada". In 2014, things were not much different! According to the Edmonton Community Foundation's 2014 Vital Signs Report, "the numbers of reported sexual assaults are high across the country, but they are especially high in our city. Edmonton has the highest number of police reported sexual assaults when compared to any other large city in the country." For comparison, Edmonton's reported sexual assault rate was 74.2 per 100,000 while Calgary had 49.5 and Ottawa had 45.8. However, this is a good news story. The organizations in Edmonton have worked together to educate the public about consent, the specialized medical team is available 24/7, and the police investigate sexual violence complaints thoroughly. Specialized services staffed by knowledgeable, caring, and dedicated staff make the difficult process of reporting a little easier.

The Canadian Women's Foundation conducted a national survey of gender based violence in Canada in 2009. 460,000 incidents of sexual assault were reported to victim advocates and medical practitioners in one year, yet only 10% of sexual assaults are reported to police across Canada. The most common reasons expressed for not reporting are that victims think they will not be believed and/or that they fear they will be blamed for the violence. Girls experience sexual violence at much higher rates than boys, 82% of all reported victims under the age of 18 are female. Girls are 4 times as likely as boys to be sexually assaulted by a family member. 66% of all female victims of sexual assault are under the age of 24 and 11% are under the age of 11. One half of all Canadian women have experienced at least one incident of physical or sexual violence after the age of 16.

The United Nations Women reported in 2013 that, globally, 35 % of all women have experienced sexual violence. In some countries, the sexual assault rate is as high as 70%. Women aged 15 - 44 are more at risk of becoming a victim of sexual assault and domestic violence than they are from cancer, traffic accidents, malaria or war.

Every culture and every community is affected by sexual violence. But something has shifted recently. In Canada - in Alberta - in Edmonton - community attitudes are changing. Traditional and social media have played a significant role. There have been several cases that have pushed the issue of sexual violence to the forefront. High profile media personalities being charged with sexual violence. Female politicians reporting victimization, both historical and recent, by fellow politicians. Female and male highly competitive athletes are reporting sexual abuse by coaching staff. An adolescent engaging in sexting with unknown individuals using blackmail demanding increasingly explicit photos. Another adolescent drinking to the point of intoxication, and unable to consent to sexual activity, was sexually assaulted - and bystanders videotaped the violence and then electronically shared it with peers. The bullying of these victims, and their sense of humiliation, resulted in tragic suicide.

Finally, the general public is saying that we, as a society, have to do something to stop sexual violence. The SACE counselling programs are responding to more requests for help to begin to heal from the trauma of sexual violence. The public education department is dealing with increasing numbers of community organizations and schools asking for assistance in helping their constituents understand issues as they relate to sexual violence across the lifespan. Diverse communities are acknowledging the toll sexual violence has within their groups and are asking for help to address the issues.

Governments at all levels are recognizing the impact unacknowledged/untreated sexual violence has on society at large. Many of these victims do not complete their education (or face challenges continuing in school), do not maintain employment, have conflicts with law enforcement, do not maintain healthy personal relationships, have unsafe/inadequate housing, develop mental health concerns, develop addictions, seek frequent emergency medical care, and have suicidal thoughts and actions. These victims become easy targets for individuals involved in the illegal drug trade and prostitution to prey upon.

The Association of Alberta Sexual Assault Services has made tremendous strides province wide promoting the needs of sexual assault survivors and the help that exists. Governments are stepping forward and contributing additional resources to accommodate more assistance for victims as soon as they reach out for help because all of us benefit when unhealthy coping strategies can be avoided.

I would like to thank our generous and stable funders, The United Way of the Alberta Capital Region, City of Edmonton Family and Community Support Services, Alberta Justice & Solicitor General, Alberta Human Services and Alberta Health. As well, there are many individuals, organizations and corporations who have helped us address this significant problem that often renders victims unable to lead the happy, healthy and contributing lives they would like. This would include the Edmonton Community Foundation, TELUS Community Foundation, AB Edie Equities Ltd., Servus Credit Union, Gruvpix Media Productions, Imperial Equities Inc., Parlee McLaws LLP, Kevin and Jennifer Boyd, Lloyd Sadd Insurance Brokers, VKO LLP, among many others.

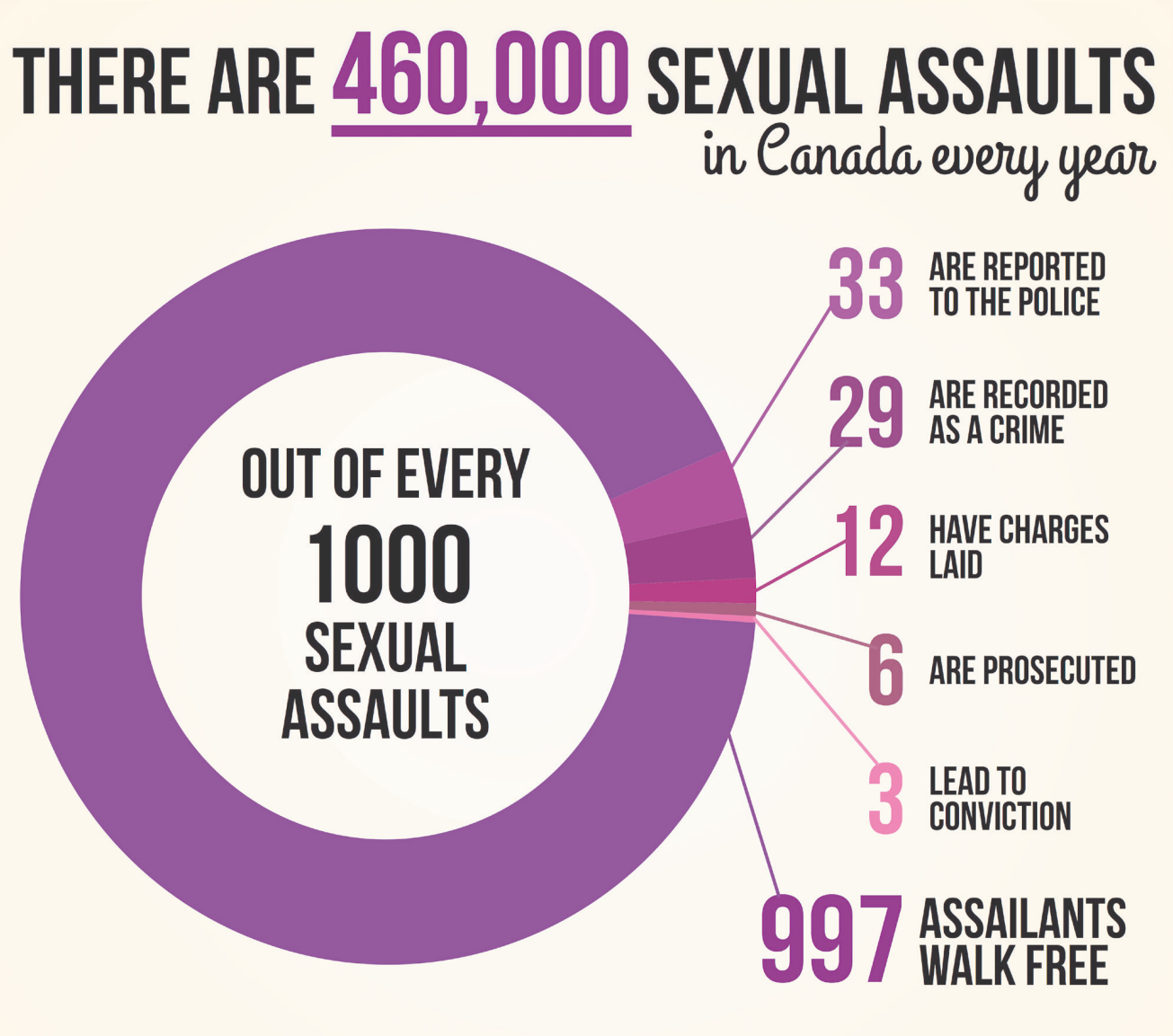
In February 2014, SACE held a gala, *It Takes Two*, to raise awareness of the prevalence of sexual violence in our community and the services SACE provides to offer healing and recovery to those whose lives have been impacted. An enormous thank you is extended to all those who made the evening such a success!

I would like to thank the SACE Board of Directors for their belief that, together, our community can eliminate sexual violence. Susan Jamieson, Carlynn McAneeley, Ryan Schetzle, Elaine Degrandpre, Denise Watson, Karen Booth, Allison Downey-Damato, Gillian Evans, Mary Frances Fitzgerald, Namatra Gill, Shawna Grimes, Pat Harrish, Amber Krasowski, Laura Lee, JoAnn McCartney, Kirsty Prasad, and John Ratcliff are the highly valued and respected leadership of this organization.

SACE volunteers are our link to our community. A volunteer is often the first person to hear a disclosure of sexual assault. Volunteers advise us and help us recognize and respond quickly to community issues. We could not do our work without them. Thank you to each and every one of you.

The SACE staff are an incredible group of talented and professional individuals who work hard every single day directly addressing sexual violence issues. Thank you to Karen Dushinski, Monika Penner, Christy Hennig, Janelle Boisvert, Katie Poirier, Lauren Wiles, Maija Prakash, Maria Skriver, Matilda Kamara, Ruth Pullam, Morgan Bissegger, Hala Kaiss, Nikki Bernier, Stephanie Olsen, Annette Klevgaard, Meital Siva-Jean, Sara Cameron, Shannah Barros, Marion Desplenter, Pat Crowell, Terra Irvine, Mélanie Brochu and Mary Jane James.

Karen L. Smith,  
Executive Director



Source: Johnson, "Limits of a Criminal Justice Response: Trends in Police and Court Processing of Sexual Assault," in Sheehy, *Sexual Assault in Canada: Law, Legal Practice and Women's Activism*, 2012.



## Client Services Department

As Director of Client Services, I remain amazed by my colleagues and the dedication and passion they bring every day to their work with clients. I want to take this opportunity to thank them for the lessons they teach me every day. I am honored to be a part of such an amazing group of professionals.

### Child and Adolescent Program

In 2014, the Child and Adolescent Program consisted of four capable staff members whose time was split with the Adult Program: Monika Penner, Lauren Wiles, Shazin Mohamed-Standing and Karen Dushinski. During 2014, our staff had over 2700 consultations with community members, parents and professionals, as well as over 1354 hours of individual counselling with children and teens. The Child and Adolescent Program received referrals from various sources including: the Zebra Centre, the Child and Adolescent Protection Centre at the Stollery Children's Hospital, Region 6 CFSA, Metis Child and Family Services, Edmonton Public and Catholic School Systems, Alberta Mental Health, doctors, psychologists and other community agencies. Our counsellors continue to be considered experts in our field by those in the community looking for information and resources to better support children and their families.

### Adult Counselling Program

The Adult Counselling Program at SACE offers group and individual counselling for individuals of all genders over the age of 18 who have been affected by sexual violence. Clients may attend individual counselling sessions, with the focus on stabilization and encouraging healthier coping mechanisms in their healing. Individual counselling also helps to prepare clients for the appropriate groups available at SACE.

Our adult counsellors logged over 3356 hours of client sessions. In addition our adult therapists consulted with over 3800 community members. Over the course of the past year, we provided seven different therapeutic groups to many clients. In addition to our therapeutic role, SACE provides support for individuals who are navigating the justice system. SACE continued to benefit from the hard work and expertise of the adult counselling team: Shirley Howarth, Matilda Kamara, Christy Hennig, Katie Poirier, Maria Skriver, Maija Prakash, and Ruth Pullam.

Another part of our role in Edmonton and surrounding areas is to provide training to frontline professionals and students in order to increase capacity in our community to respond to the issues of sexual violence. SACE also has relationships with the various counselling programs in the city. In 2014, we provided placements for two students, Ruth and Maija, from City University. We thank them for their hard work and dedication to our clients.

Dr. Karen Dushinski,  
Director of Client Services

## Diversity Outreach, Intake And Court Support Program

The Diversity Outreach, Intake and Court Support Program is responsible for reaching out and building relationships with diverse communities, including Aboriginal peoples, ethno-cultural communities, new immigrants, seniors, persons living with disAbilities, and those who self-identify as a sexual minority. This program also processes all adult requests for treatment, court preparation, and in-person support during court proceedings.

2014 was a year of learning and expansion, with participation in many community events, workshops, conferences, connecting with new organizations, and strengthening existing partnerships. In addition, SACE staff spent hundreds of hours providing information and support to survivors of sexual violence involved in the legal system. SACE court support personnel recognize that the number of sexual assault cases, in which an accused is identified, charged and convicted, is very low in comparison to the actual number of sexual assaults. However, it is very powerful for victims of sexual violence to hear from law enforcement and prosecutorial staff, when there are no charges or conviction, that they believe something happened, but, unfortunately, there is not enough evidence.

All requests for adult individual or group counselling are processed by the Intake Worker. Adults of all genders have their cases assessed, and appropriate programs recommended. In 2014, 715 individuals reached out to the SACE Intake Worker in order to begin the process of healing from the trauma of sexual violence.

One of the goals of the Diversity Outreach, Intake and Court Support program has always been to reduce barriers and increase the accessibility of SACE services to the targeted communities. The outreach services in the program work to ensure that partnerships and collaborations are developed with community agencies and groups.

SACE was proud to partner with other community organizations to bring awareness to, and take action against, the issue of sexual violence. SACE also works closely with partner agencies in the development of a community plan to address the sex trafficking of girls and women in Edmonton.

The Diversity Outreach, Intake and Court Support Program also provided various workshops and presentations throughout the year to diverse communities. Topics included Healthy Sexuality for Seniors, Myths Around Sexual Assault, Sexual Assault among People Living with Disabilities, as well as Healthy Relationships and Abusive Relationships. As well, many staff development opportunities were created for the entire SACE staff by arranging speakers from various diverse communities to dialogue about concerns of their specific group.

The Diversity Outreach, Intake and Court Support Program continues to be very successful, in part because of the support from other departments and staff at SACE. Their readiness to share their knowledge, experience and networks not only assisted the Program, but also helped to develop a strong professional bond within the organization.

**Meital Siva-Jain**

Diversity Outreach, Intake and Court Support Program

## Public Education Board Report

2014 was an exciting and eventful year for the Public Education Department. As with most years, the majority of our time was spent facilitating information sessions within the community. This year was particularly successful for our team as we spoke to almost 11,000 participants, which is a significant achievement for our small team and the largest number we have ever reached in a single year. It is also important to note that 9275 of these participants were youth, a demographic that is often particularly vulnerable to sexual abuse. In 2014, we also spoke to over 850 professionals within the community. This is another record setting number, and one that we are particularly proud of. In building the capacity of professionals to support survivors, we extend the reach of our organization and increase the number of people in our community who are able to effectively respond to disclosures and positively impact the healing journeys of survivors.

In 2014 we continued to respond to the demand for our Youth, Sexual Violence and Technology Workshop by facilitating presentations to both youth as well as adults working with youth. Notably, we were asked to facilitate this workshop for the Edmonton Police Service, the Zebra Child Protection Center, Child and Family Services, School Resource Officers, and Victim Service Units from across the province. We also took on a consultative role with a number of junior and senior high schools whose students were experiencing sexual violence through the use of technology, in both the Edmonton Public and Catholic school districts. In addition to advising administration on how to best respond to the needs of students experiencing this type of abuse, we were also given the opportunity to speak to the entire student body, and to train school staff on how to respond to disclosures of abuse and facilitate conversations with students on the topic.

We are excited to report that the issue of sexual violence facilitated through the use of technology has been taken up by the Sexual Assault Voices of Edmonton (SAVE) committee as the focus of their third poster campaign. Our peers within the professional community have also recognized the expertise that the SACE Public Education team has around this timely topic, and we have been asked to lead the SAVE committee in the development of the messaging in this new campaign.

In the first few months of the year our team worked with the SACE counselling department to develop a presentation on healthy relationships and boundaries specifically for adults with disabilities and their supporters. The creation of this presentation was important to use as an organization, as this is yet another demographic of people who experience extremely high rates of sexual abuse. While we had initially planned to offer this as a single, in-house workshop, we ended up offering this session throughout the rest of the year in order to respond to the overwhelming interest from the community. One of our Public Educators also worked collaboratively with the Pride Center of Edmonton to create and facilitate a presentation on family violence in sexual minority communities. There has also been great demand for this information.

In addition to facilitating presentations within the community, our team was also invited to speak at a number of conferences in 2014. In April we were invited to present at the Alberta Human Services Minister's Forum on Child Sexual Abuse and participate in a conversation with other professionals on best practices in addressing child sexual abuse. We also spoke at the Sexual Exploitation Working Group conference, the Diverse Voices conference, and the Gay Straight Alliance conference.

In 2014 our team was also instrumental in the planning and execution of SACE's first annual *It Takes Two* fundraising gala. The event was such an incredible success that SACE decided to take up *It Takes Two* as an ongoing event, and we have since held yet another successful evening of community, hope and healing at *It Takes Two* 2015.

Nikki Bernier,  
Director of Public Education

## Volunteer Services

I am thrilled to have the opportunity to act as Director of Volunteer Services while Joy is away on maternity leave. It is truly an honour to work with so many passionate and committed volunteers. In 2014, 208 people dedicated their time and energy to the Sexual Assault Centre of Edmonton in a multitude of ways, all of which contribute to our collective goal of ending sexual violence in our community.

This past year saw many new volunteers complete the crisis intervention training program and go on to join existing volunteers on the SACE 24-hour sexual assault crisis line. All of the crisis line volunteers consistently demonstrate how eager they are to stay engaged with the issue of sexual violence, and SACE as an organization, by regularly attending volunteer meetings ready to learn and reconnect with other volunteers. Beyond that, they also continue to display compassion and strength in their work on the crisis line. The same passion for helping others that brought them to SACE continues to shine through in all they do.

2014 was an exciting year for special event and fundraising volunteers! These volunteers represented SACE at several different events in the community including Edmonton Pride, the Edmonton Comic and Entertainment Expo and, of course, *It Takes Two* 2014, the SACE first annual fundraising gala. We also saw a continued commitment from a core group of special event volunteers. Those folks can always be counted on when we need them which we sincerely appreciate!

Several new office volunteers also joined the SACE family in 2014. Helping with a number of different things around the office, these volunteers are an invaluable asset to SACE. The friendly and kind demeanor of these volunteers always makes the reception area a welcoming environment for clients, staff and anyone else who visits our agency. The impacts of their contributions to our agency are immense.

I firmly believe that SACE would not be the strong, effective agency that it is if it were not for our devoted group of volunteers. It is humbling to know that so many people are willing to give their time so freely and so generously to such an important cause. The volunteers at SACE are integral to achieving our mission of supporting and empowering survivors of sexual assault and engaging the larger community to start effecting change around the issue of sexual violence. Volunteers, we thank you for everything you do. We could not do it without you!

Shannah Barros  
Acting Director of Volunteer Services

“In every community, there is work to be done.  
In every nation, there are wounds to heal. In  
every heart, there is the power to do it.”

*Marianne Williamson*

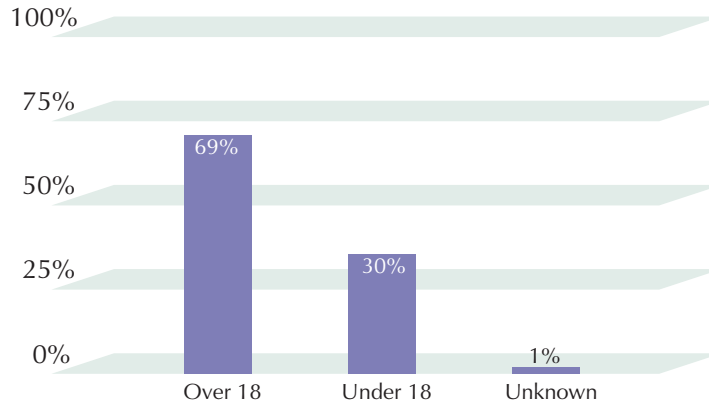
# Volunteers

Aalia S	Crystal T	Jessie D	Maria M	Ronald B
Alexandra W	Curtis M	Jessie M	Marion D	Ronald P
Alfie L	Cynthia	Joan L	Mark H	Ruth P
Allan E	Danielle B	JoAnn M	Mary Jane J	Ryan L
Allison D	Danielle C	Joanna S	Matilda K	Ryan S
Alyna J	Dave D	Jocelyn F	Megan S	Sabrina B
Alyssa S	Dave M	Johanna J	Meital S	Samantha P
Amanda E	David S	John R	Melanie A	Sandi F
Amarjeet S	Deb G	Jol?ne D	Melanie B	Sara C
Amber K	Deb J	Joy S	Melanie E	Sarah V
Andrea S	Deb P	Julie D	Melanie K	Sean A
Andrea T	Deb T	Kailey	Mercedes Z	Shannah B
Andreia M	Debra D	Kaitlyn S	Michaela R	Shauna S
Andrew C	Denise W	Kallie B	Mike S	Shawna G
Andrew K	Desiree S	Karen B	Millie H	Shazin
Andy D	Dianne J	Karen D	Molly J	Shelly W
Angele B	Donna B	Karen S	Mona G	Shirley
Annette K	Dorsa S	Katherine D	Monika P	Shirley T
Aren R	Doug M	Katherine H	Monique M	Stephanie C
Arisha M	Elaine A	Kathleen Q	Mya I	Stephanie O
Ashtin D	Elaine B	Kathleen S	Myrna D	Stephy S
Atifah H	Elaine D	Katie P	Natalie S	Susan J
Avril I	Elaine S	Katrina R	Natasha S	Susan L
Bai Z	Ellen H	Kaylca R	Neeti V	Susan L
Barbara U	Elyse C	Kelly J	Nicole G	Tanner M
Brittany I	Emily K	Kelly S	Nikki B	Tasha O
Brody I	Eric M	Kendra C	Nikki P	Tasia M
Calista B	Erin L	Kenzie G	Noreen R	Teagan Z
Carlynn M	Eryn P	Kevin B	Norm J	Terra I
Carolise B	Evette S	Kim D	Pam F	Tessa H
Catherine S	Gillian E	Kim M	Parker L	Tomasz C
Cathy G	Glynis T	Kirsty P	Pat C	Tricia M
Chandra A	Hala K	Kristina H	Pat P	Troy M
Chloe S	Heather S	Laura L	Pauline W	Tyler L
Chris I	Jackie M	Laura-Ann B	Peter B	Valentina K
Chris J	Jane A	Lauren W	Prab R	Vanessa K
Christine M	Janelle B	Leanne W	Rachel G	Veronica J
Christy H	Janice D	Linda J	Rebekah S	Wade W
Cindy O	Janine G	Lise G	Rick L	Wence L
Claire D	Jeannette L	Louise M	Rick N	Wendy H
Corrie	Jeff A	Madison A	Rob J	
Cristina S	Jen D	Maija P	Robin C	

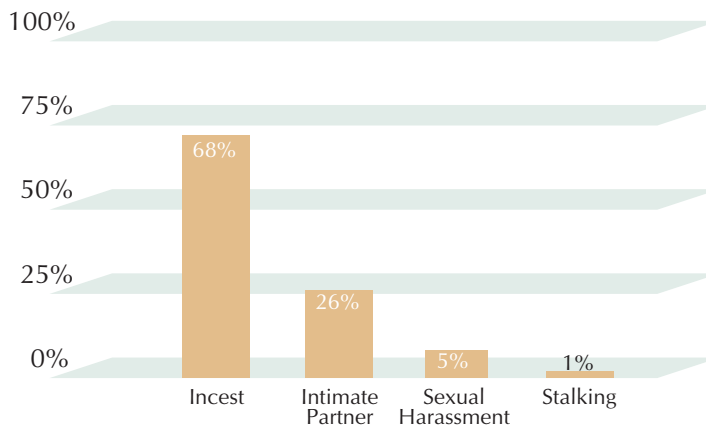
"What we have done for others alone dies with us. What we have done for others and the world remains and is immortal."  
*Albert Pine*

# 2014 Crisis Line Stats

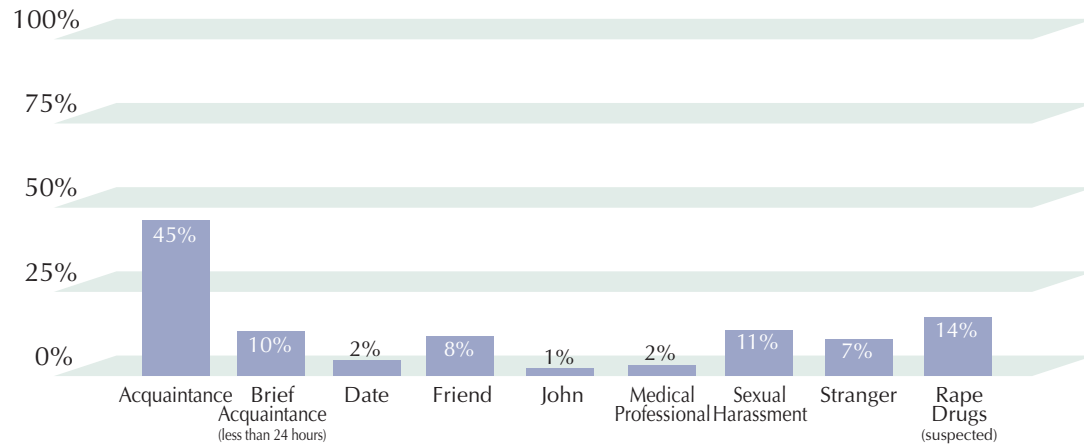
### Victim Age at Time of Assault



### Assault Type - Inter Familial

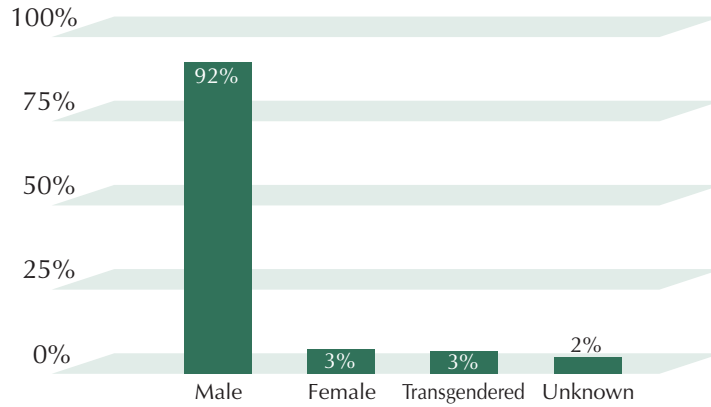


### Assault Type - Extra Familial

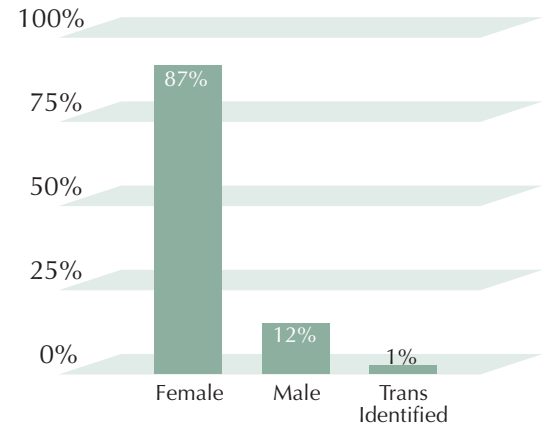


# 2014 Crisis Line Stats

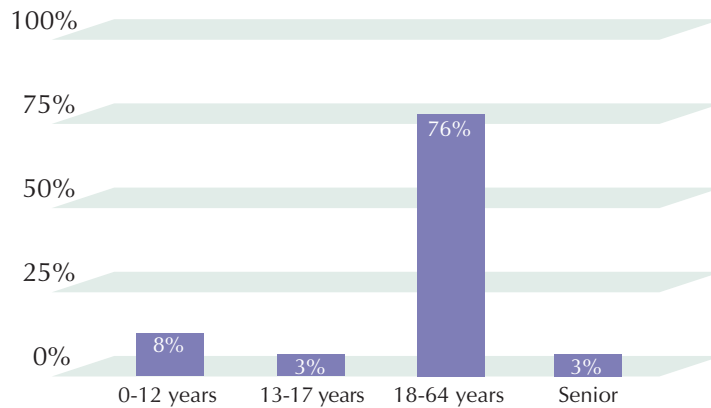
Perpetrator Identified As



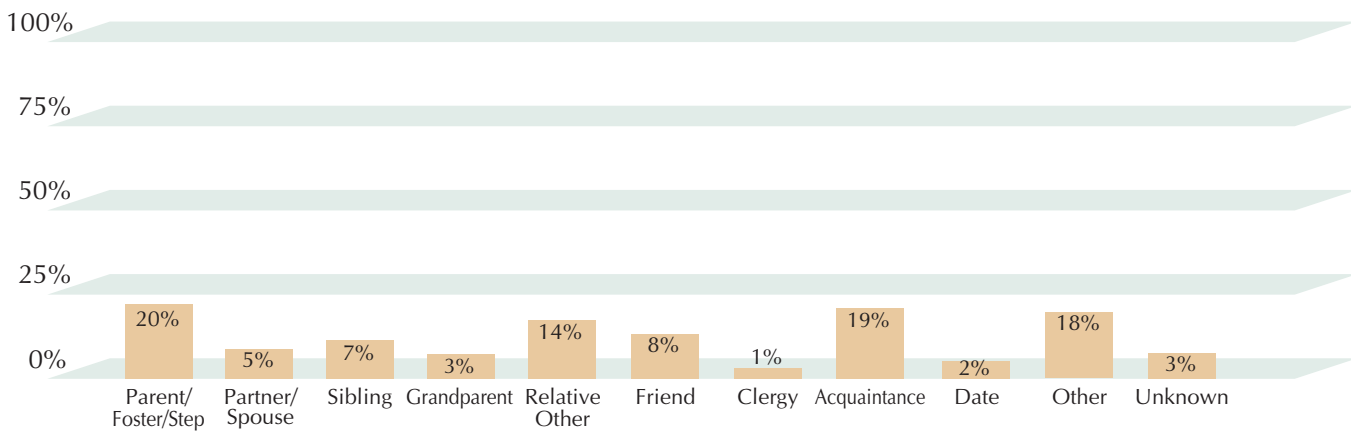
Self Identified Gender of Victim



Perpetrator Age at Time of Assault



Perpetrator Relationship to Victim



~ providing crisis intervention ~ public education ~ counselling



~ providing crisis intervention ~ public education ~ counselling

Suite 205, 14964-121A Avenue  
Edmonton, Alberta T5V 1A3  
Business line: 780-423-4102  
T.T.Y. (Telephone Device for the Deaf) line: 780-420-1482  
fax: 780-421-8734

**24 hour crisis line: 780-423-4121**

**[www.sace.ab.ca](http://www.sace.ab.ca)**

**[info@sace.ab.ca](mailto:info@sace.ab.ca)**

